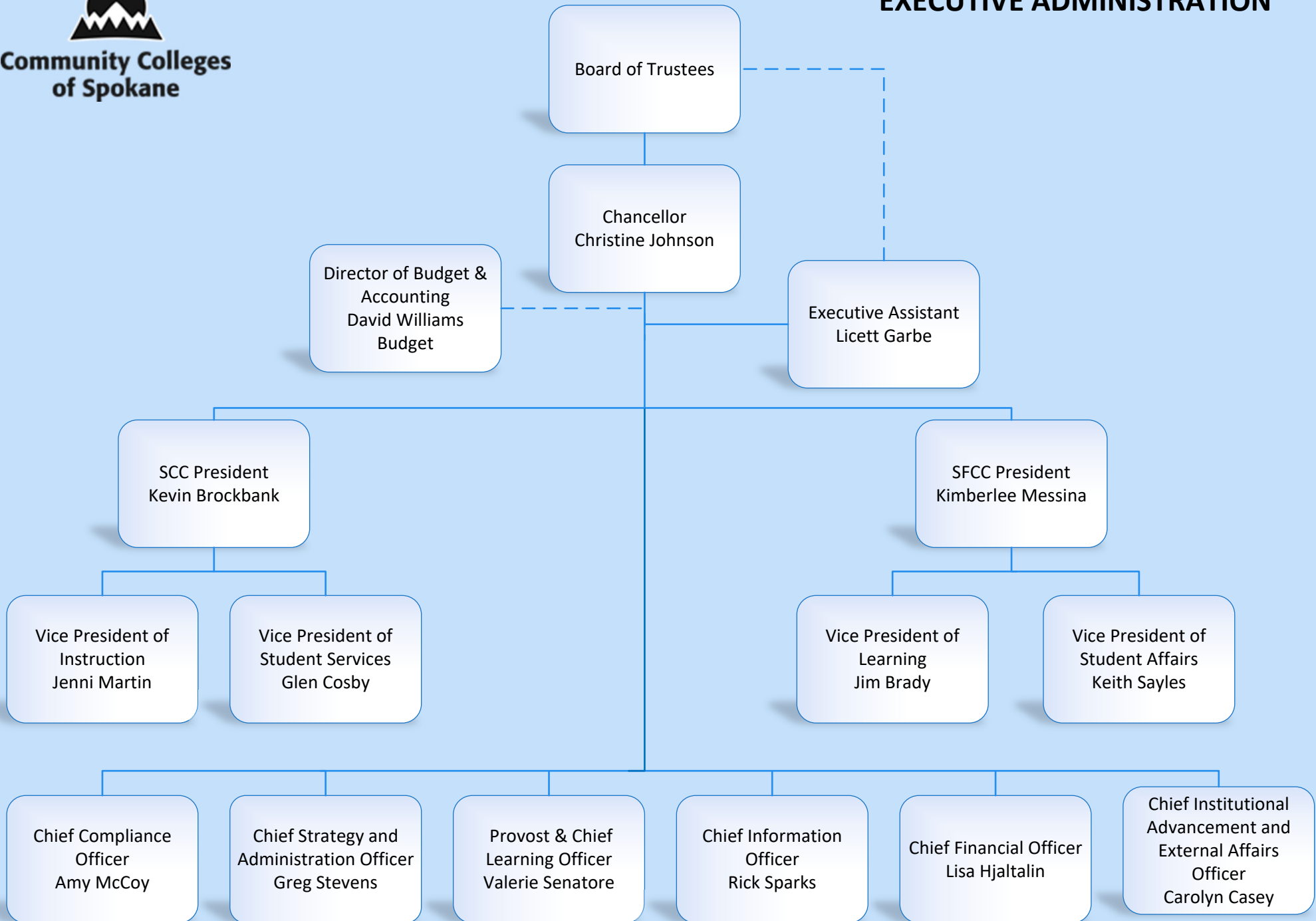


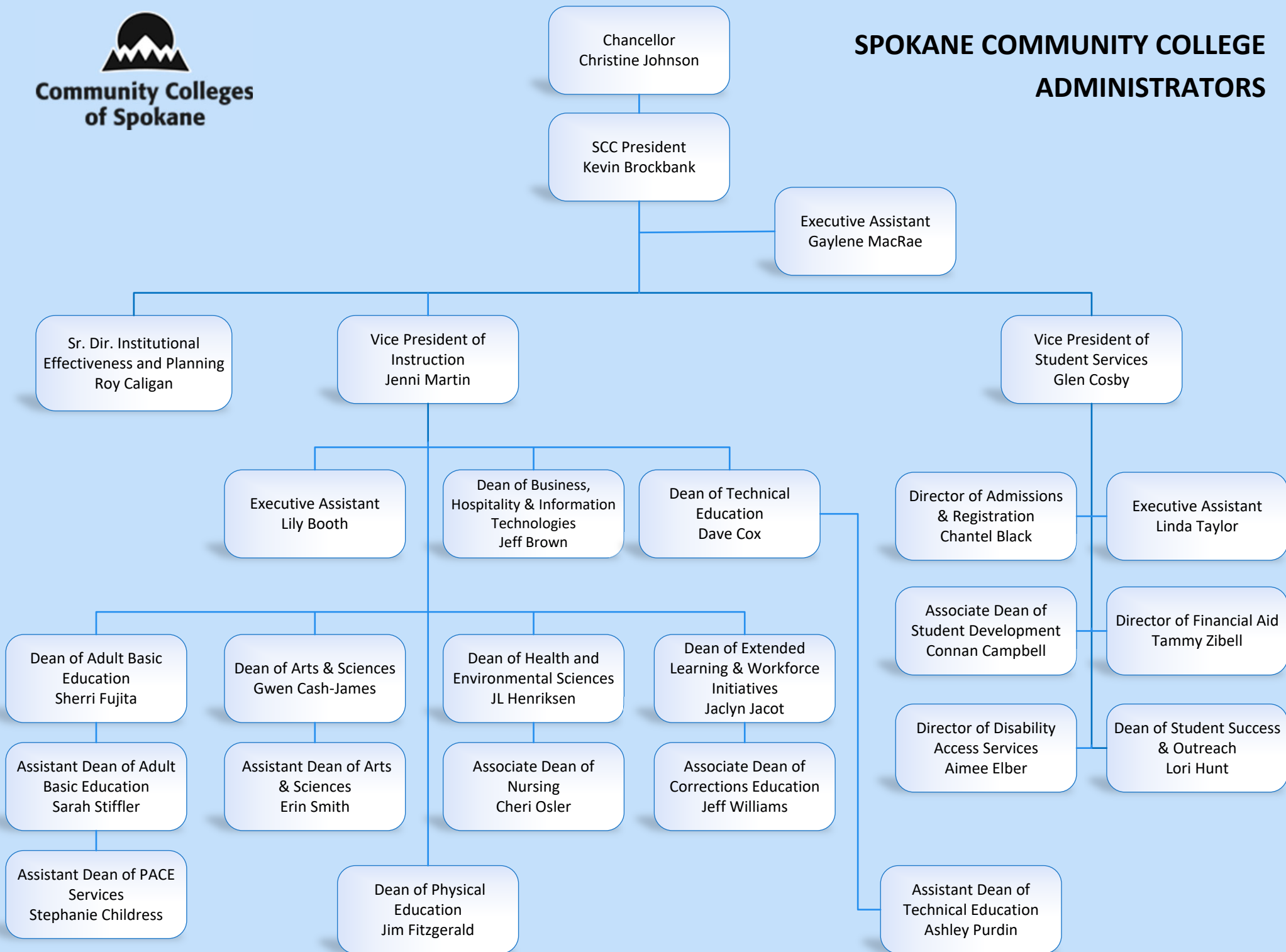


# EXECUTIVE ADMINISTRATION



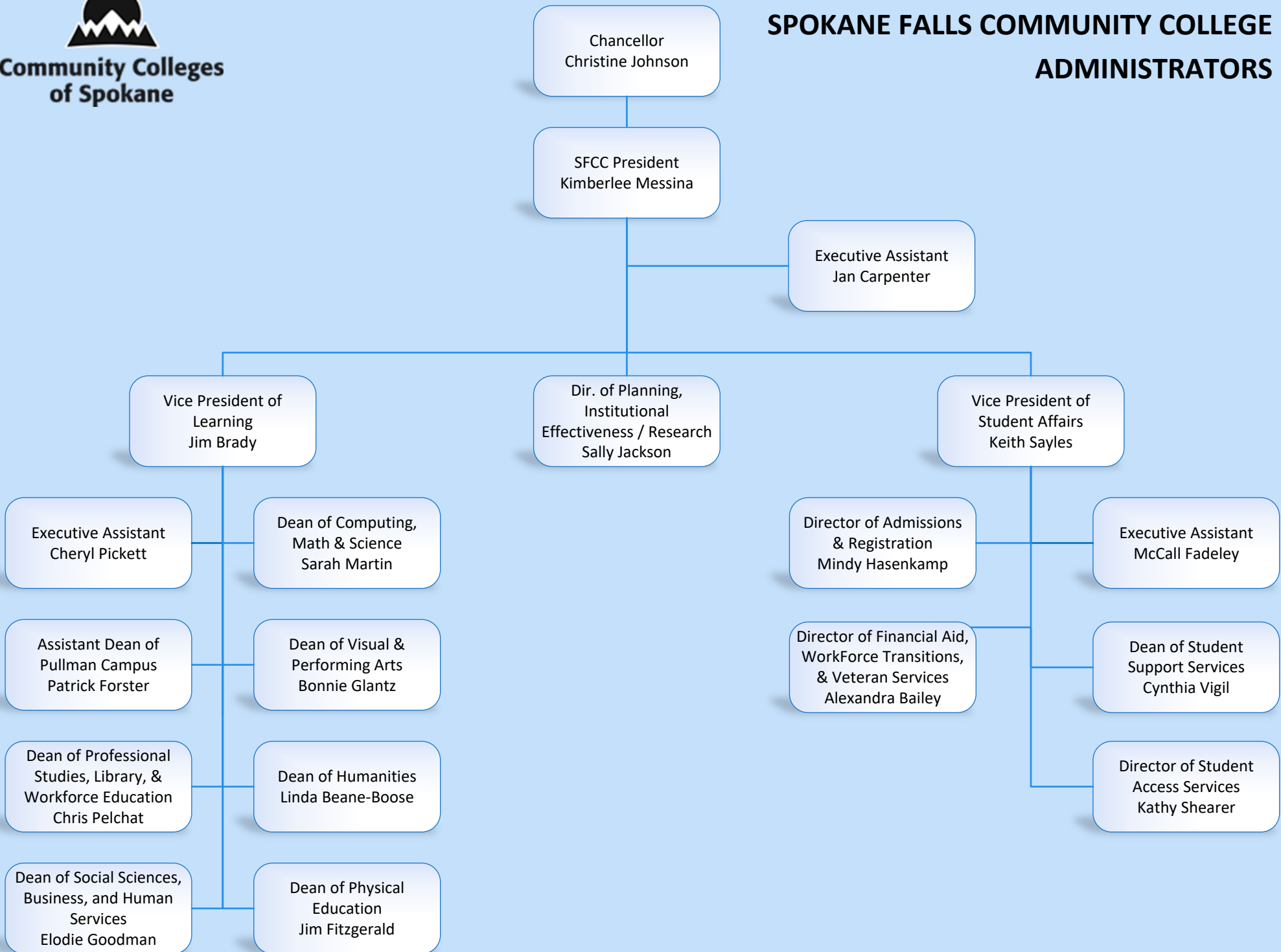


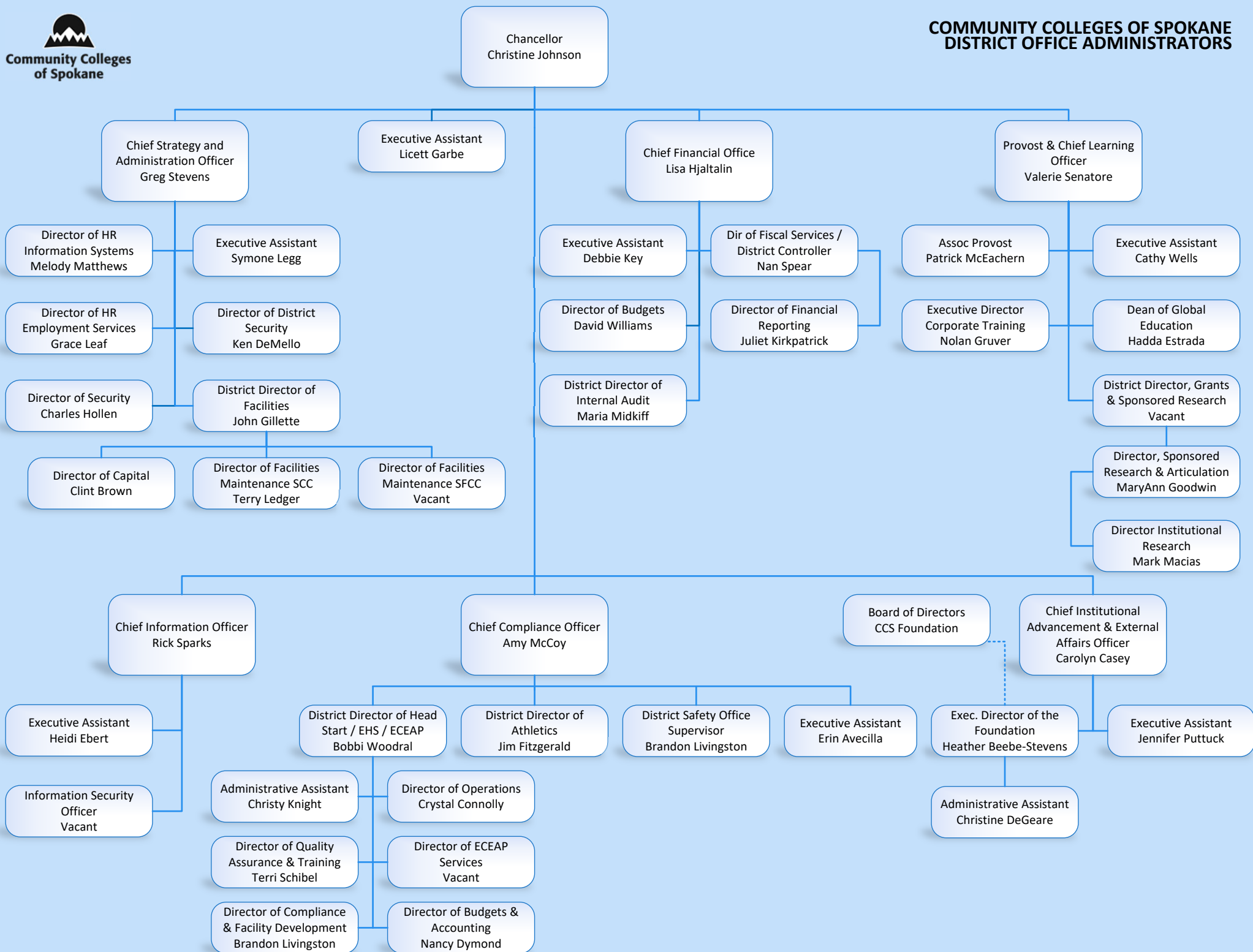
# SPOKANE COMMUNITY COLLEGE ADMINISTRATORS





# SPOKANE FALLS COMMUNITY COLLEGE ADMINISTRATORS





# Community Colleges of Spokane Organizational Chart

---

## Board of Trustees

- Chancellor, Christine Johnson
  - Executive Assistant, Licett Garbe

## Chancellor's Cabinet

- Spokane Community College President, Kevin Brockbank
    - Vice President of Instruction, Jenni Martin
    - Vice President of Student Services, Glen Cosby
  - Spokane Falls Community College President, Kimberlee Messina
    - Vice President of Learning, Jim Brady
    - Vice President of Student Affairs, Keith Sayles
  - Chief Strategy and Administration Officer, Greg Stevens
  - Chief Financial Officer, Lisa Hjaltalin
  - Chief Compliance Officer, Amy McCoy
  - Chief Information Officer, Rick Sparks
  - Chief Institutional Advancement and External Affairs Officer, Carolyn Casey
  - Provost & Chief Learning Officer, Valerie Senatore
- 

## Chancellor, Christine Johnson

### President, Kevin Brockbank

- Executive Assistant, Gaylene MacRae
- Senior Director Institutional Effectiveness and Planning, Roy Caligan
- Vice President of Instruction, Jenni Martin
  - Executive Assistant, Lily Booth
  - Dean of Adult Basic Education, Sherri Fujita

- *Assistant Dean of Adult Basic Education, Sarah Stiffler*
  - *Assistant Dean of PACE Services, Stephanie Childress*
- Dean of Arts & Sciences, Gwen Cash-James
  - *Assistant Dean of Arts & Sciences, Erin Smith*
- Dean of Business, Hospitality & Information Technologies, Jeff Brown
- Dean of Extended Learning & Workforce Initiatives, Jaclyn Jacot
  - *Associate Dean of Correctional Education, Jeff Williams*
- Dean of Health & Environmental Sciences, JL Henriksen
  - *Associate Dean of Nursing, Cheri Osler*
- Dean of Physical Education, Jim Fitzgerald
- Dean of Technical Education, Dave Cox
  - *Assistant Dean of Technical Education, Ashley Purdin*

- Vice President of Student Services, Glen Cosby
    - Executive Assistant, Linda Taylor
    - Director of Admissions & Registration, Chantel Black
    - Director of Financial Aid, Tammy Zibell
    - Director of Disability Access Services, Aimee Elber
    - Associate Dean of Student Development, Connan Campbell
    - Dean of Student Success & Outreach, Lori Hunt
- 

## Chancellor, Christine Johnson

### President, Kimberlee Messina

- Executive Assistant, Jan Carpenter
- Director of Planning, Institutional Effectiveness & Research, Sally Jackson
- Vice President of Learning, Jim Brady
  - Executive Assistant, Cheryl Pickett
  - Dean of Social Sciences, Business & Human Services, Elodie Goodman
  - Dean of Computing, Math, & Science, Sarah Martin
  - Dean of Professional Studies, Library, & Workforce Education, Chris Pelchat
  - Dean of Humanities, Linda Beane-Boose
  - Dean of Physical Education, Jim Fitzgerald
  - Assistant Dean of Pullman Campus, Patrick Forster
  - Dean of Visual & Performing Arts, Bonnie Glantz
- Vice President of Student Affairs, Keith Sayles
  - Executive Assistant, McCall Fadeley
  - Director of Admissions & Registration, Mindy Hasenkamp
  - Dean of Students Support Services, Cynthia Vigil
  - Director of Disability Access Services, Kathy Shearer
  - Director of Financial Aid, WorkForce Transitions, & Veteran Services, Alexandra Bailey

---

## District Office Administrators

### Chancellor, Christine Johnson

- Executive Assistant, Licett Garbe
- Chief Strategy and Administration Officer, Greg Stevens
  - Executive Assistant to Chief Strategy and Administration Officer, Symone Legg
  - District Director of Facilities, John Gillette
    - *Director of Capital, Clint Brown*
    - *Director of SCC Facilities Maintenance and Operations, Terry Ledger*
    - *Director of SFCC Facilities Maintenance and Operations, Vacant*
  - Director of Human Resources Employment Services, Grace Leaf
  - Director of Human Resources Information Systems, Melody Matthews
  - Director of Security, Charles Hollen
  - Director of District Security, Ken DeMello
- Chief Financial Officer, Lisa Hjaltalin
  - Executive Assistant, Debbie Key
  - Director of Budgets, David Williams
  - Director of Fiscal Services & District Controller, Nanette Spear
    - *Director of Financial Reporting, Juliet Kirkpatrick*
  - District Director Internal Audit, Maria Midkiff
- Chief Institutional Advancement and External Affairs Officer, Carolyn Casey
  - Executive Assistant, Jennifer Puttuck
  - District Development Officer & Executive Director of the Foundation, Heather Beebe-Stevens
    - *Administrative Assistant III, Christine DeGeare*
- District Director of Information Technology Systems, Rick Sparks
  - Administrative Assistant, Heidi Ebert
  - Information Security Officer, Vacant



- Chief Compliance Officer, Amy McCoy
  - Executive Assistant, Erin AVECILLA
  - Director of Athletics, Jim Fitzgerald
  - District Director of Head Start / Early Head Start/ Early Childhood Education and Assistance Program, Bobbi Woodral
    - *Administrative Assistant IV, Christy Knight*
    - *Director of Budgets and Accounting, Nancy Dymond*
    - *Director of Compliance & Facility Development, Brandon Livingston*
    - *Director of Early Childhood Education and Assistance Program Services, Vacant*
    - *Director of Operations, Crystal Connolly*
    - *Director of Quality Assurance & Training, Terri Schibel*
  - District Safety Office Supervisor, Brandon Livingston
  
- Provost & Chief Learning Officer, Valerie Senatore
  - Executive Assistant, Cathy Wells
  - Associate Provost, Patrick McEachern
  - Dean of Global Education, Hadda Estrada
  - Director of Grants & Sponsored Research, Vacant
    - *District Executive Director Library Services, MaryAnn Goodwin*
      - Managing Director Institutional Research, Mark Macias
  - Executive Director of Continuing Education, Nolan Gruver